



Anticipate | Prevent | Act

MRPC Profile

2026

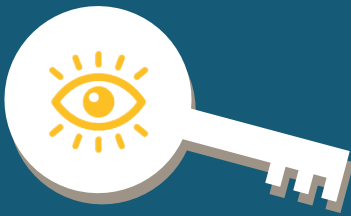


About Us

Mashariki Research and Policy Centre (MRPC), is a non-profit, interdisciplinary and independent thinktank headquartered in Nairobi, Kenya. As a premier institution in security foresight, it informs policy and action through tailored evidence-based analysis. MRPC provides insights derived from forecasting, trends analysis, simulations and scenario development to anticipate threats and opportunities in the Greater Eastern Africa's evolving geostrategic landscape. Its main program, Conflict and Geopolitics, focuses on three core areas: Conflict Trends, Geopolitical Shifts, and Environmental Security. The Centre delivers customized advisory to governments, multilateral agencies, NGOs and the private sector. While others describe what happened, MRPC predicts what is coming next. We decode complexity, anticipate crisis, and empower decision-makers to act before it's too late.

Vision

A premier strategic security foresight think tank in the Greater Eastern Africa



Mission

To conduct cutting-edge research in the security foresights domain that provides policy options for a secure and prosperous region.

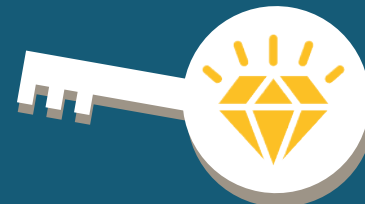


Motto

Towards a secure and prosperous region

Mantra

Anticipate | Prevent | Act



Core Values

- **Professionalism:** Delivering excellence in every engagement
- **Independence:** Maintaining objectivity and analytical integrity
- **Intellectual freedoms:** Pursuing truth without political constraint
- **Interdisciplinary focus:** Bridging security, economics, environment, and governance
- **Learning & Adaptation:** Evolving our methods as threats evolve

Centre's Objectives

01. Research and Analysis

Conduct in-depth research and analysis on security foresights in the Greater Eastern Africa region.

02. Policy Advisory

Engage policymakers with evidence-based expert advice and policy recommendations.

03. Collaborations and Partnerships

Foster collaborative initiatives and partnerships with like-minded institutions.

04. Capacity Building

Capacity development for professionals in the security foresight domain.

05. Knowledge and Practice Platform

Provide space to emerging and experienced policy practitioners in the security foresight field.

Our Program

Conflict and Geopolitics

Mashariki Research and Policy Centre delivers its work through a single flagship program - Conflict and Geopolitics - which transforms conflict and geopolitical data into policy-relevant and actionable foresight insights to support early threat identification, crisis prevention, and resilience building. The program leverages predictive analytics, scenario modeling, and field-validated assessments to anticipate emerging risks and inform strategic decision-making, with a particular focus on Greater Eastern Africa.

Focus Areas

This program is structured around three focus areas namely:

1. Conflict Trends

MRPC decodes evolving intra and inter-state conflicts, communal tensions, and hybrid armed actors, transforming real-time data into actionable insights for governments, multilateral agencies, NGOs, and the private sector.

Focus Area Impact

- i Anticipates and prevents conflict escalation through early warning systems
- ii Guides stabilization and rapid response strategies with predictive accuracy
- iii Strengthens regional security and resilience frameworks
- iv Informs evidence-based policy and targeted community interventions



2. Geopolitical Shifts

MRPC translates geopolitical, economic, and security data into strategic foresight, enabling our stakeholders to navigate the Greater Eastern Africa's evolving power dynamics, from great power competition to regional integration challenges.

Focus Area Impact

- i Anticipates shifts to prevent geopolitical miscalculations and crises
- ii Guides proactive strategy formulation for governments and investors
- iii Strengthens policy coherence across national and regional levels
- iv Supports evidence-based diplomacy and multilateral coordination



3. Environmental Security

MRPC transforms environmental and climate data into conflict foresight, predicting how resource scarcity, climate shocks, and environmental degradation will drive instability in vulnerable regions.

Focus Area Impact

- i Anticipates environmental shocks before they trigger violent conflict
- ii Guides adaptive governance and climate-sensitive security planning
- iii Strengthens cross-border cooperation on shared environmental threats
- iv Informs actionable, data-driven policy interventions



Geographical Focus

Mashariki Research and Policy Centre maintains an active research and advisory presence across 16 countries in the Greater Eastern Africa region as follows:

Horn of Africa: Somalia, Ethiopia, Eritrea, Djibouti

East African Community: Kenya, Uganda, Tanzania, Rwanda, Burundi, South Sudan

Indian Ocean Islands: Comoros, Madagascar, Mauritius, Seychelles

Extended Region: Democratic Republic of Congo, Sudan



Kenya



Uganda



Tanzania



Sudan



South Sudan



Somalia



DRC



Seychelles



Rwanda



Mauritius



Madagascar



Ethiopia



Burundi



Eritrea



Djibouti



Comoros

PRODUCTS & SERVICES

MRPC delivers its products and services through multiple formats designed for different stakeholder needs:

Publications

- **Academic Journals** – Peer-reviewed research advancing security foresight insights
- **Policy Briefs** – Concise, actionable recommendations for policymakers (4-8 pages)
- **Policy Commentaries** – Rapid analysis of unfolding situations (2-3 pages)
- **Working Papers** – In-depth technical analysis and scenario modelling
- **Monthly Outlook** – Forward-looking threat assessments and opportunity mapping.

Engagement Formats

- **Expert Roundtables** – Closed-door strategic discussions with key stakeholders
- **Policy Dialogues** – Multi-stakeholder forums bridging research and practice
- **Workshops & Conferences** – Regional convenings on emerging security challenges
- **Customized Training** – Tailored capacity development for institutional clients

How we Deliver Impact

At Mashariki Research and Policy Centre, we view impact as both the steps we have already taken and the future we are shaping. In a short span, the Centre has begun to establish itself as a credible, foresight-driven voice in regional security dynamics, with milestones that reflect both delivery and direction. They include:

Research & Analysis

Cutting-edge studies using forecasting, trend analysis, simulations, and scenario development to anticipate security threats and opportunities.

Policy Advisory

Tailored, evidence-based expert advice and strategic recommendations delivered directly to decision-makers when it matters most.

Collaborative Partnerships

Strategic alliances with governments, multilateral agencies, academic institutions, and civil society to amplify impact and build collective capacity.

Capacity Building

Professional development programs that strengthen the skills of security practitioners, policymakers, and first responders across the region.

Knowledge Platforms

Spaces for emerging and experienced practitioners to exchange ideas, debate solutions, and advance the field of security foresight.



Human Resource Model

We operate a lean, agile structure designed to maximize impact while attracting world-class talent:

Organisational Structure

- **Board of Directors** – Strategic oversight and governance
- **Management Team** – Executive leadership and operational coordination
- **Core Functions:** Research, Administration, Communications, Human Resources
- **Associate Fellows** – Specialised experts contributing on a flexible basis
- **Visiting Fellows** – International scholars and practitioners on short-term engagements

Talent Strategy

- **Hybrid Work Models** – Attracting and retaining local, regional, and international expertise
- **Continuous Professional Development** – Staff participation in external training and fellowship programs
- **Progressive Mentorship** – Structured frameworks to nurture emerging researchers and analysts
- **Performance-Driven Culture** – Merit-based advancement and recognition

Sustainability Model

Revenue Streams:

Understanding the financial challenges facing think tanks globally, MRPC has developed a diversified sustainability strategy:

- i. Grant Seeking - Competitive research grants from foundations and development partners
- ii. Research Bids and Consultancies - Contracted analysis and advisory services for governments and multilateral agencies
- iii. Trainings and Capacity Building - Fee-for-service professional development programs
- iv. MRPC Board Support - Core funding from strategic partners and board contributions
- v. Donations from well wishers - Support from well-wishers committed to regional peace and security

Recent Publications & Thought Leadership

Latest Commentary & Analysis (2025-2026)

- "Organized Crime and Regional Stability in the Greater Eastern Africa Region" (January 2026)
- "Peace For Minerals: Future Prospects of DRC-Rwanda Washington Accords" (December 2025)
- "Environmental Security and The Future of Fragile Borders in the Greater Eastern Africa Region" (December 2025)
- "EU Aid Freeze to Tanzania: Implications for Future Regional Stability" (December 2025)

Monthly Outlook Series

Strategic threat assessments and opportunity mapping published monthly, providing forward-looking analysis on emerging security dynamics across Greater Eastern Africa.

Podcasts & Media Engagement

MRPC hosts regular podcasts and media briefings, contributing expert commentary to international outlets including BBC, Bloomberg, and regional media.

Milestone Achievements

Regional Readiness (March 2025)

MRPC joined the UN and African Union Logistics Officers Curriculum Writing Board at the International Peace Support Training Centre, Nairobi. Since then, the centre has been centrally involved in implementing the **East African Standby Force (EASF) Logistics Operational Planning Process Course**, enhancing military, police, and civilian readiness for multidimensional peacekeeping across the region.

Capacity Building (April 2025)

In partnership with the East African Institute for Peace and Governance (EAIPG), MRPC delivered **Preventing and Countering Violent Extremism (PCVE) training** in Nairobi, combining basic and advanced sessions for participants from Ghana, Somalia, and Kenya.

Strategic Partnerships: Kenya's Conflict Vulnerability Index (2025-2028)

MRPC has entered a partnership with Kenya's National Cohesion and Integration Commission (**NCIC**) to develop the **Conflict Vulnerability Index (CVI)** for Peacebuilding and an early warning system for Kenya's 2027 general election and beyond. By transforming historical hotspot data into predictive tools, the CVI enables proactive interventions and coordinated preventive action. The project impact is to reduce electoral violence; enhanced coordination among security agencies, and community-level conflict mitigation.

Continental Innovation: The Conflict Vulnerability Index for Africa

Building on the Kenya CVI, MRPC is co-developing the **Conflict Vulnerability Index for Africa** - the continent's first predictive, subnational, field-validated conflict prevention tool. This rapid-cycle, forward-looking solution is uniquely designed for Africa's dynamic risk landscape. This is important because current early warning systems are reactive.

Knowledge Leadership: Mashariki Security Journal (February 2025)

The inaugural edition of the **Mashariki Security Journal** established a new platform for rigorous dialogue on peace and security challenges in Greater Eastern Africa, addressing fragility, transnational threats, and environmental risks with practical, problem-solving analysis. The purpose is to provide a credible, African-led voice in regional security debates, bridging academic research and policy practice.

Why Work With MRPC?

a) For Governments

MRPC provides the strategic foresight you need to stay ahead of threats, allocate resources efficiently, and make evidence-based decisions that protect citizens and advance national interests.

b) For Multilateral Agencies

MRPC offers localized expertise and predictive analytics that enhance program design, improve targeting, and increase the effectiveness of peace and security interventions.

c) For NGOs & Civil Society

MRPC delivers context-specific analysis that strengthens program relevance, identifies emerging needs, and connects grassroots realities with policy advocacy.

d) For Private Sector

MRPC assess political and security risks with precision, helping businesses navigate uncertainty, protect investments, and operate responsibly in fragile environments.

Engage With Us

a) Commissioning Research:

Contact us to discuss customized analysis, scenario planning, or risk assessments tailored to your specific needs.

b) Partnership Opportunities:

We welcome collaborations with institutions sharing our commitment to evidence-based policy and regional security.

c) Training & Capacity Building:

Explore our professional development programs designed for security practitioners, policymakers, and analysts.

d) Subscribe to Our Insights:

Access the Mashariki Monthly Outlook and receive timely analysis of emerging threats and opportunities.

Our Partners

Each partner represents a valued relationship built on trust, innovation, and shared goals. Together, we strive to deliver exceptional experiences and drive mutual growth.



Membership





Contact Information

Address:

68 Mimosa Drive, Runda
P.O. Box 650-00621
Nairobi, Kenya

Website: www.masharikirpc.org

Email: info@masharikirpc.org

Phone: +254 734 088 233